



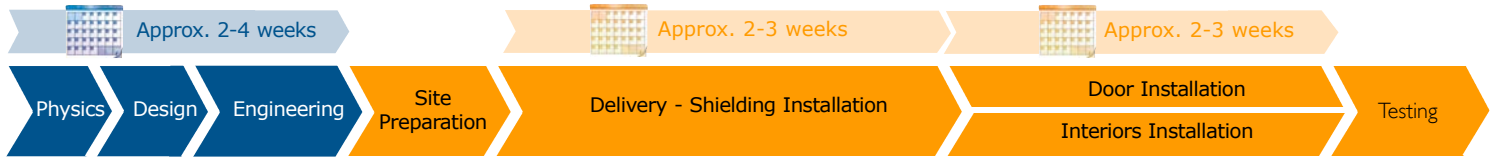
Complex, inflexible schedule, multi-step concrete installation

Simple stack-and-build, off the critical path VeriShield installation

With VeriShield, we'll be setting the ceiling shielding before the concrete design formwork and reinforcement will be ready for concrete.



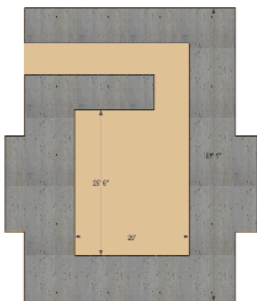
Typical VeriShield™ Timeline - Single Radiotherapy Room



Cut Weeks off the Linac Room Construction Schedule with the Veritas VeriShield Pre-Engineered Shielding System.

Typical Construction Timelines

VeriShield™ Radiation Protective Rooms far surpass concrete construction in speed of installation. They significantly reduce the overall construction time, and greatly speeds time to treatment



Concrete

3-4 months

Standard density concrete construction encompasses significant building space and requires extensive formwork, reinforcing steel and curing times.



VeriShield

2-3 Weeks

Individual VeriShield Modular Rooms are pre-engineered to accommodate all major types of equipment and local building specifications. Suitable for all site locations, the VMR is a pre-packaged system of component parts designed for each specific installation.

